

Giga NAS Dongle User's Manual

1.0 Product overview

Thank you for purchasing Giga NAS Dongle. Now you can easily install Giga NAS Dongle into your network environment. Before using this device, please read the Key Features below.

Key Features

- Support USB mass storage device
- Support Auto IP (DHCP server or DHCP Client)/ Fixed IP
- Under network environment, it supports one 10/100/1000Mb Ethernet port
- Password management provides secure access to HDD and web management
- Support SAMBA (SMB)
- Support FTP server
- Support Bit Torrent download
- Support UPnP AV media Server & Apple i-Tunes music server
- Support USB Printer server
- Compatible with Windows 2000/XP/VISTA, Mac 10.5.4 above

Giga NAS Dongle is a flexible, economical and powerful unit for your network. Follow the instructions below which will help you to connect, to set up, and to configure it.

Network environment

There are 3 different setup conditions you can choose:

1. Setup Giga NAS Dongle as DHCP Client:

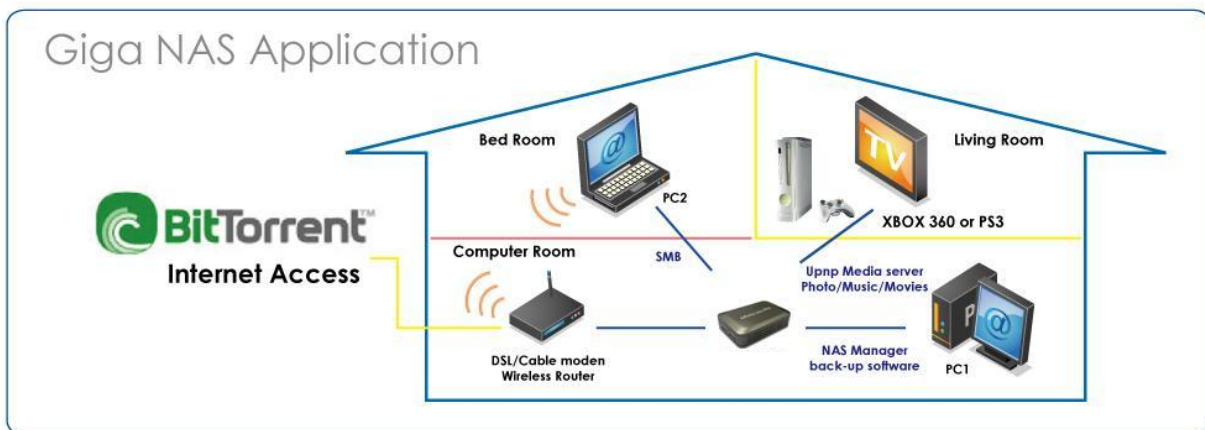
If your Giga NAS Dongle operates under a built-in DHCP server router (ex. Internet Sharing Hub), it will obtain an IP from DHCP Server automatically.

2. Setup Giga NAS Dongle as DHCP Server:

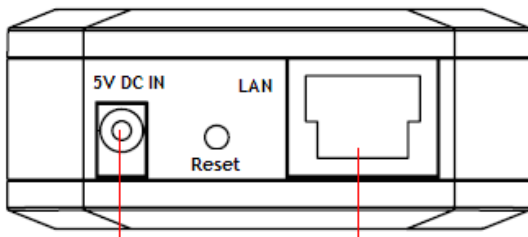
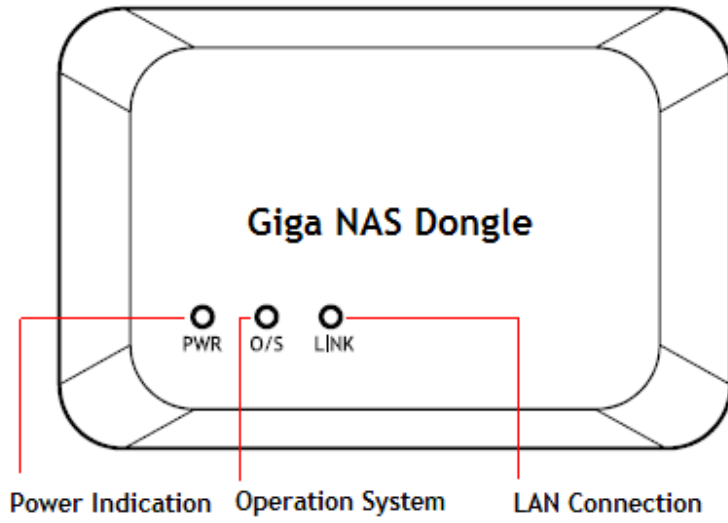
If your operating environment does not support DHCP server, Giga NAS Dongle will immediately act as DHCP server and assign an IP for installation.

3. In Static IP environment:

You need first configure the IP for Giga NAS Dongle to operate in the static IP environment. For configuring details, please refer to "IP Config" setup page.

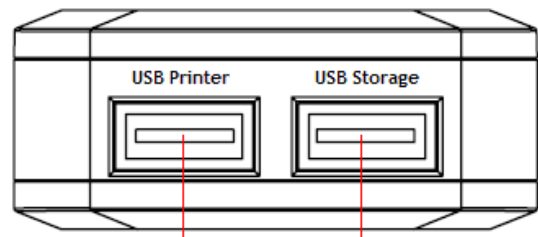


2.0 Components of the NAS system



Connect power adapter here

Connect LAN cable here

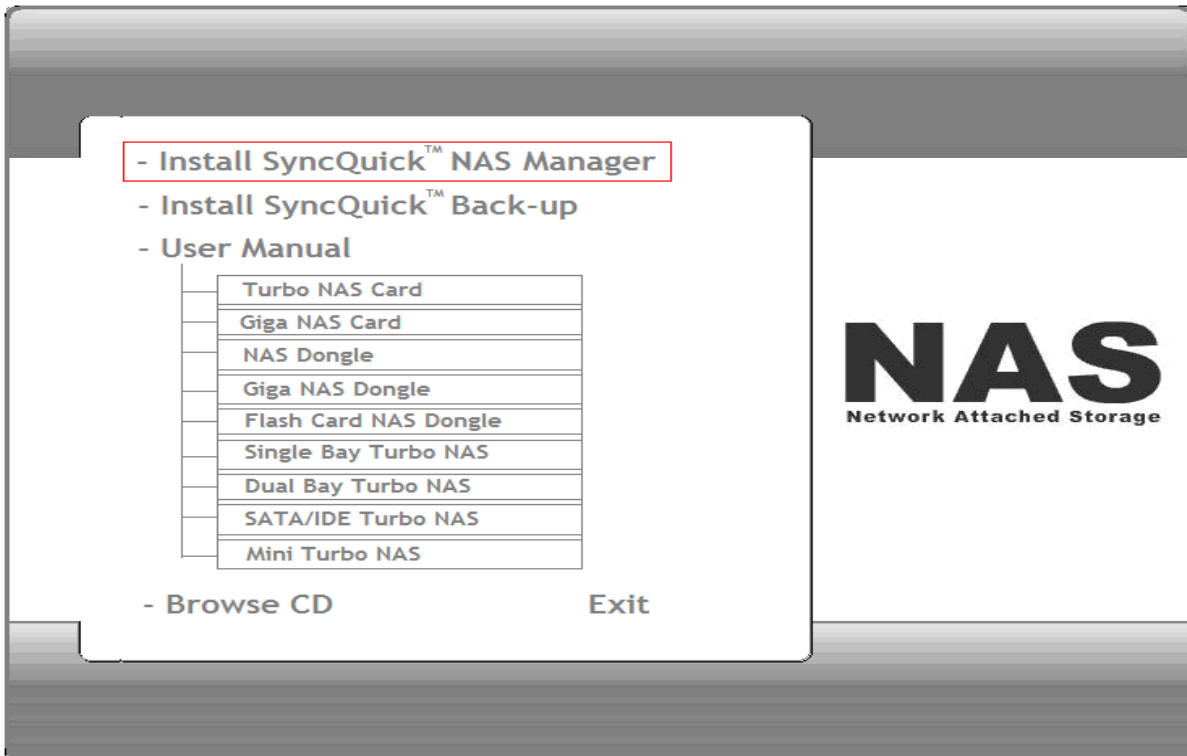


Connect USB printer here

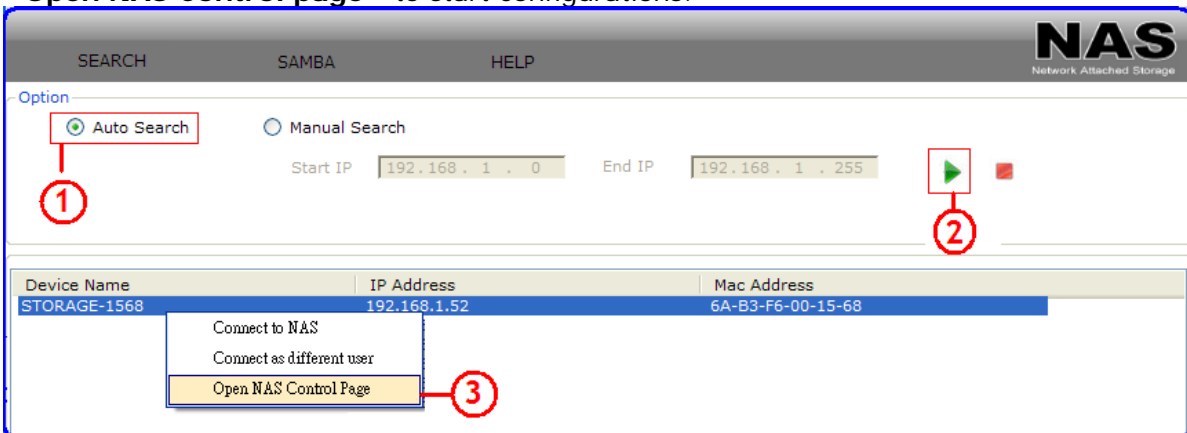
Connect USB storage here

3.0 Search Turbo NAS by SyncQuick™ NAS Manager

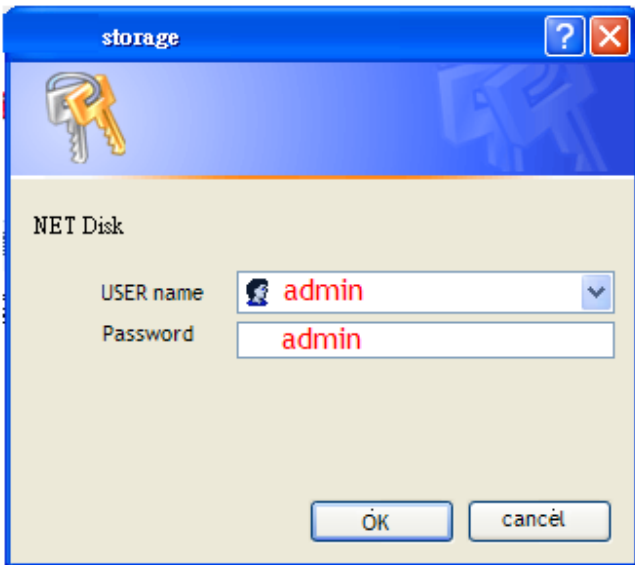
1. Run the utility CD enclosed in the package.



2. Select Auto Search and when Turbo NAS is found, right click the mouse button and select " **Open NAS Control page** " to start configurations.

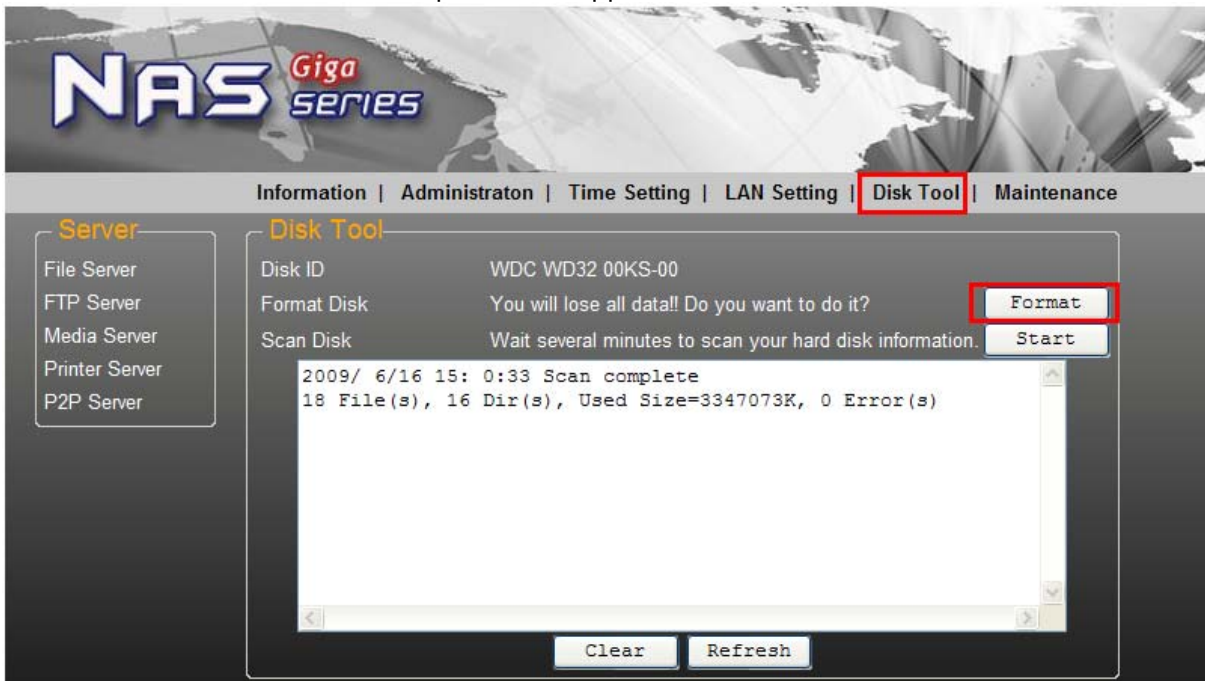


3. The default login is "admin" for both user name and password; click "OK" to enter configurations.



3.1 Hard Disk format

For the first time installation, you need to format hard disk into **FAT32** system file. Go to "**Disk Tool**" and select "**Format**". This procedure applies to either new or used hard disk.



4.0 Information

Provide the basic information for Giga NAS Dongle. User can check firmware version and available HDD capacity from this page.



4.1 Administration

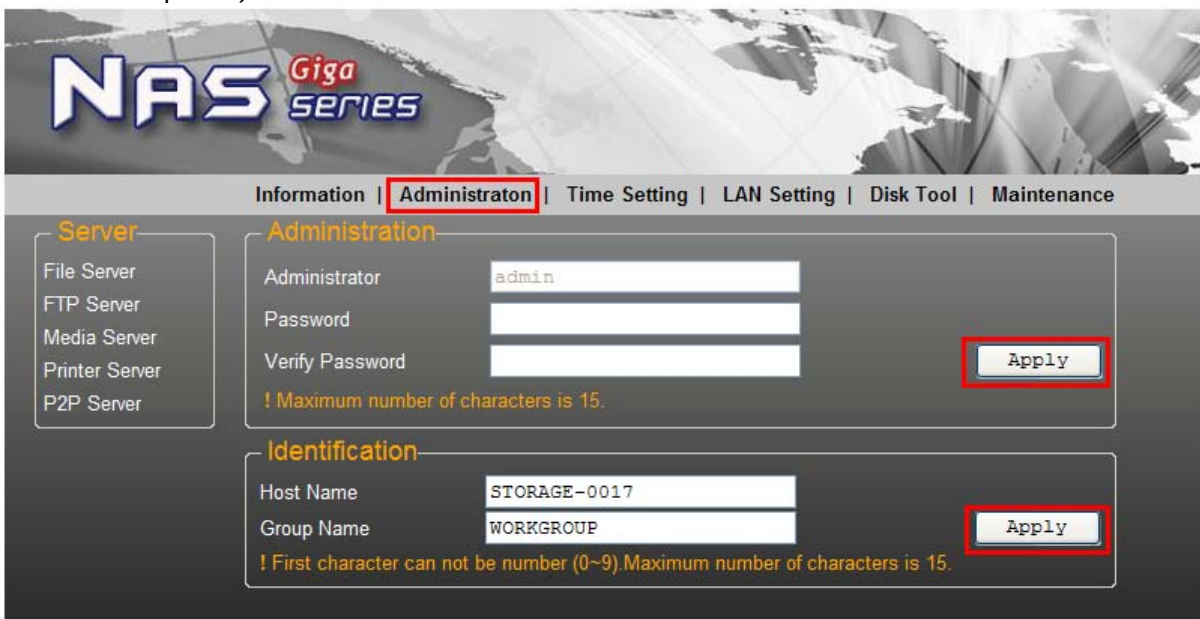
You can change and modify your host & group name, and password from this page. Click **“Apply”** to save the setting.

- **Host name:** This is used to identify your device on the network. If you prefer a different name, type in the new name and click **“Apply”** to save setting.

- **Group Name:** This should be same as your workgroup. In general, the default **“WORKGROUP”** will be OK. But if your workstation belongs to different workgroup, type in the correct group name to modify.

In Window O/S, right click on **“My computer”**, choose **“Properties”**, and go to the computer name tab to see your current workgroup.

For Mac O/S to join windows workgroup, open the directory access utility (under Applications->utilities), select SMB and click configure to modify the settings (administrator access required to access this option.)



Note: we strongly suggest you to change the password as soon as you logged in, to prevent unauthorized access.

4.2 Date/ Time setting

You can change time setting from this page. Clicks "**Apply**" to save the setting. By default, SNTP is in network time service, you can also select "Synchronize to PC". If internet access is available, we recommended setting SNTP to Network time service instead.

NAS Giga SERIES

Information | Administraton | **Time Setting** | LAN Setting | Disk Tool | Maintenance

Server

- File Server
- FTP Server
- Media Server
- Printer Server
- P2P Server

Date and Time

Date: 2009 / 06 / 18

Time: 14 : 09 : 14

Time Zone: GMT+8

SNTP Time Server: AUTO DISABLE

clock.isc.org

[]

Apply

4.3 LAN Setting

By default, the "IP Setting" is set to "Automatic IP". This is the recommended setting and will allow Giga NAS to obtain its IP address automatically. If you prefer setting it manually, select the static IP option, enter your own value and click apply to confirm the new setting.

Setting manually is useful when you have a static IP address in order to mount the network drive or setup port forwarding.

NAS Giga SERIES

Information | Administraton | Time Setting | **LAN Setting** | Disk Tool | Maintenance

Server

- File Server
- FTP Server
- Media Server
- Printer Server
- P2P Server

IP Setting

Automatic IP Static IP as below

IP Address: 192.168.1.125

Subnet Mask: 255.255.255.0

Gateway: 192.168.1.254

Primary DNS: 168.95.1.1

Secondary DNS: 0.0.0.0

Apply

DHCP Setting

DHCP status: Disable

DHCP server: Enable Disable

Apply

MAC Address

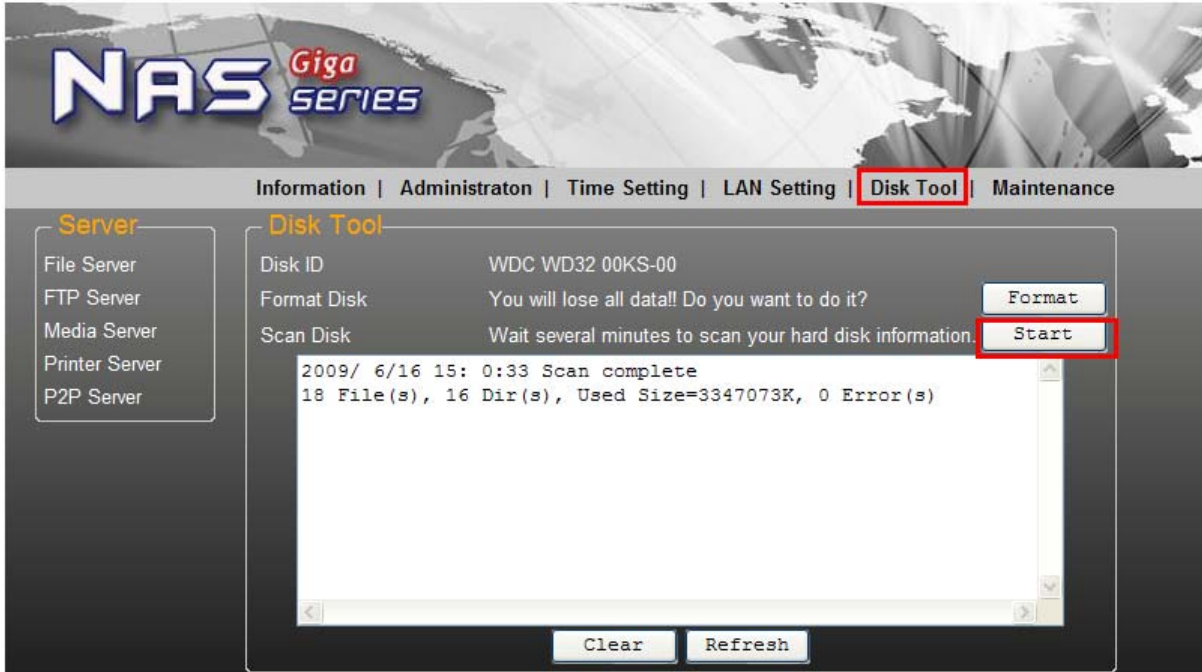
MAC address: 00:B3:F4:00:00:17

4.4 Disk Utility

In this page, you can manage the hard disk setting.

- **Format:** For the first time installation, you need to format hard disk into **FAT32** system file, this procedure applies to either new or used hard disk.

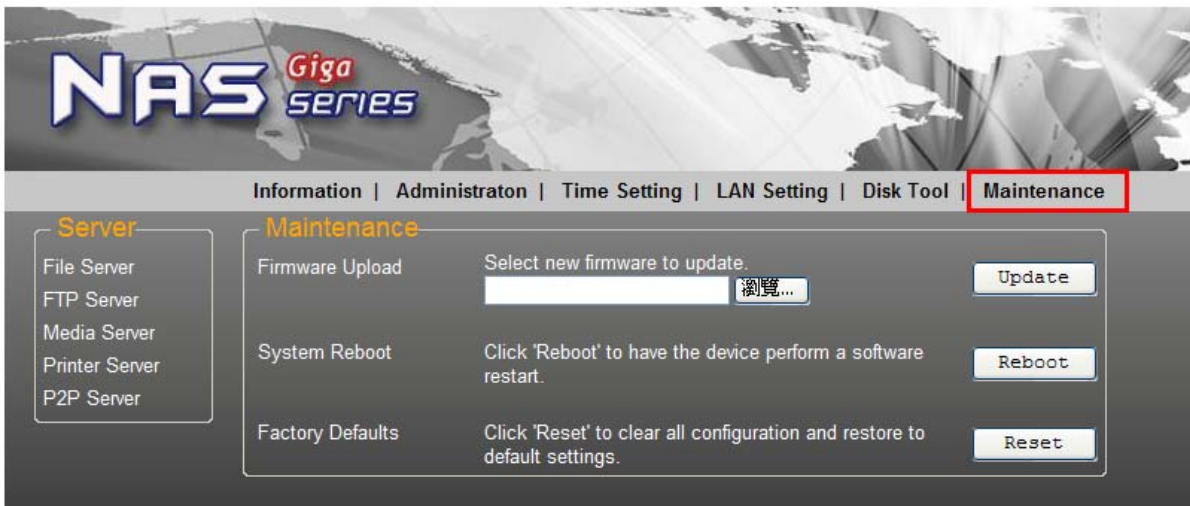
- **Scan Disk:** After the scan, it will show the number of file content and health status for the hard disk.



4.5 Maintenance

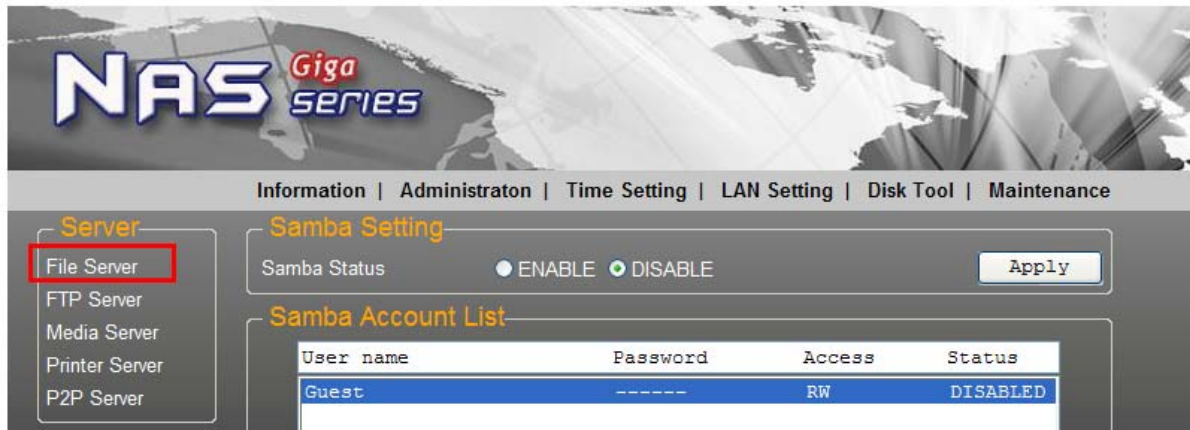
This page allows you to update Giga NAS firmware, to go back to default setting, or to reboot NAS system.

- **Firmware update:** Follow the steps below to update the loader and firmware for Giga NAS.
 - Obtain the latest firmware from your vendor.
 - Store the firmware file in your computer and decompress it if necessary.
 - Browse your system and locate the firmware (BIN file).
 - Click on "**update**".
 - Confirm the pop-up message to start the update.
 - Wait and DO NOT do anything during firmware update! This might take a few minutes.
 - Once the update is done, it will prompt you to reboot the device.
 - Click on "**Reboot**" to restart the device.
 - Wait for about one minute and then go to the status page to confirm the update is successful.
- **Factory defaults:** Forgot your admin password?? Click "**Reset**" on the factory defaults and go back to the default password setting. SAMBA/FTP account setting will still remain in the Giga NAS, other than that will go back to factory default.
- **System reboot:** This can be used to restart the network drive after a firmware update.



5.0 SAMBA Server (SMB)

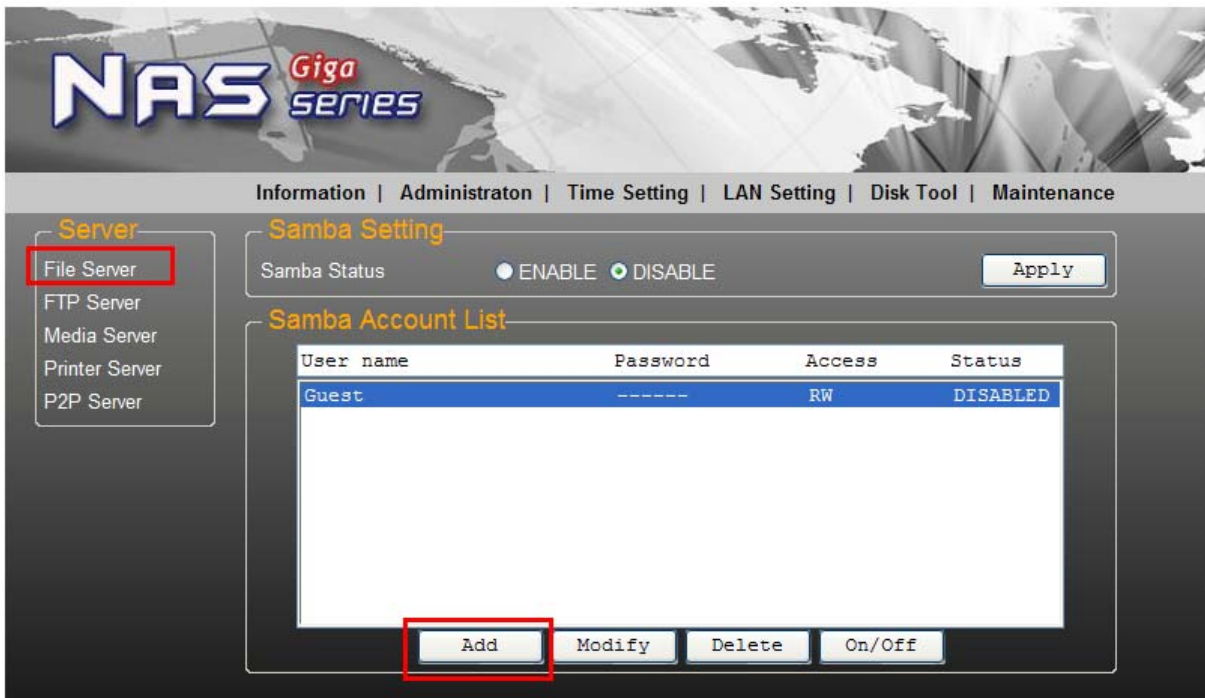
SMB server allows you to share data or files through LAN environment. A default “guest” folder is created and shared to all users from Giga NAS.



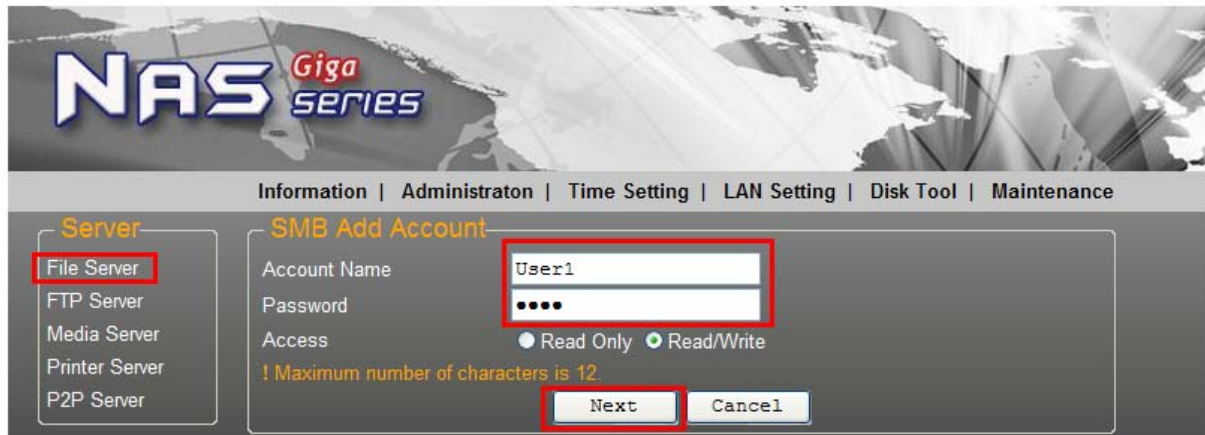
Note: Use only “English alphabet” for folder names and no special characters when creating new folders.

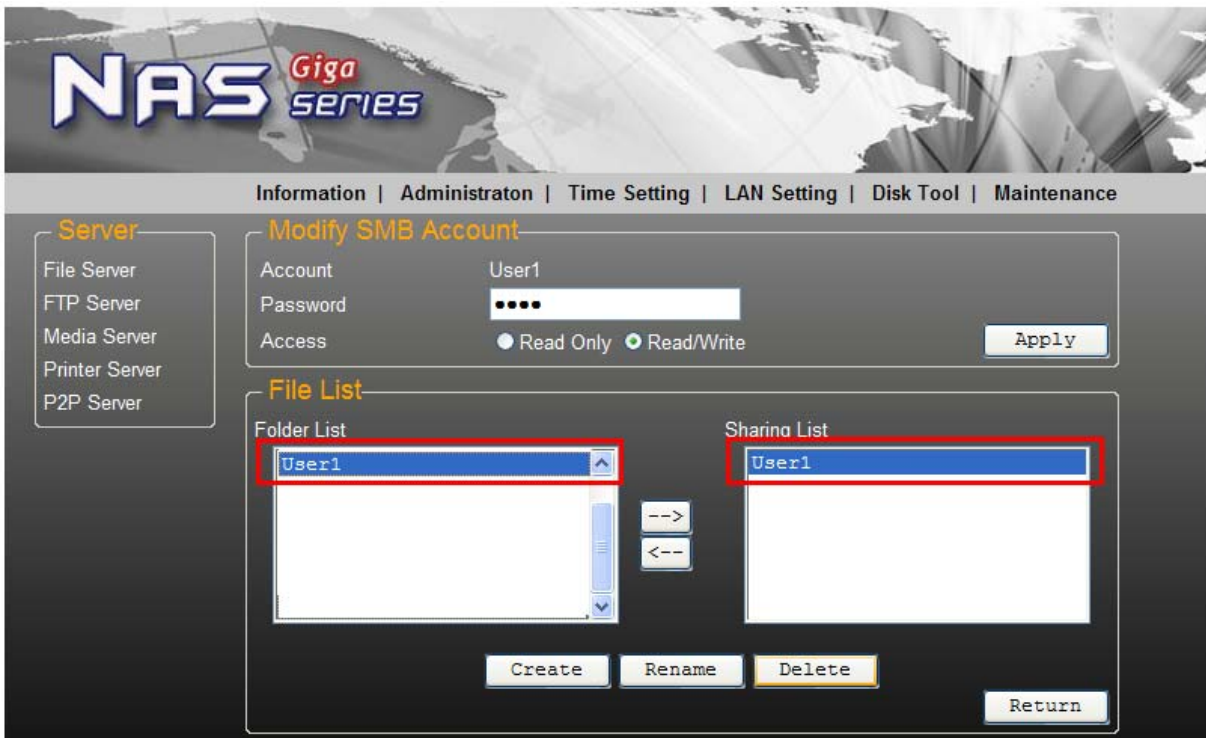
5.1 How to crate User account.

Click on the “Add” button. Type new account name, password and click “OK”.

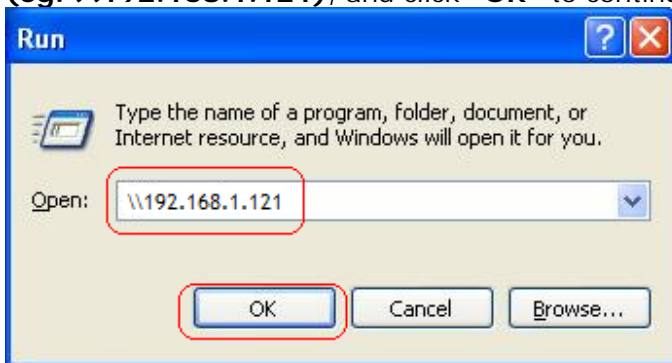


Here, we name the account "User1" to demonstrate, enter password and click "Next" to enter share management.





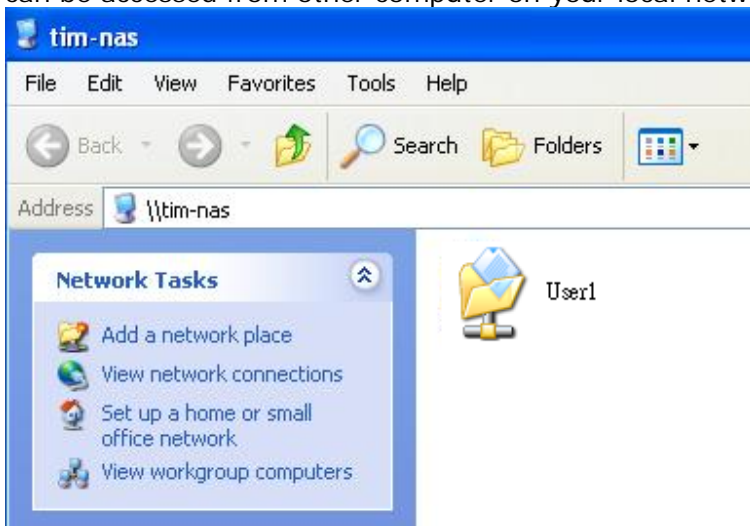
You can "Run" from Windows start button, type "\\ " and follow by the Giga NAS IP address (eg: \\192.168.1.121), and click "OK" to continue.



Type "User1" and password to login.

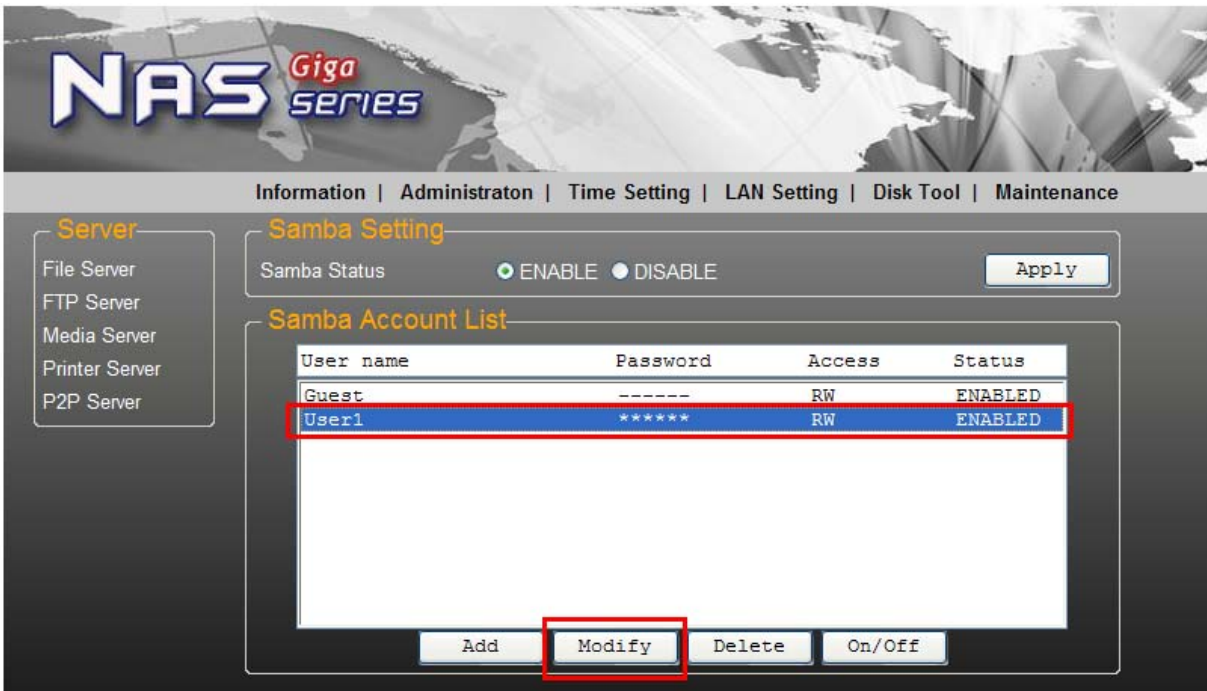


Now, you have successfully set up the folder that you wish to share on your Giga NAS. This folder can be accessed from other computer on your local network.

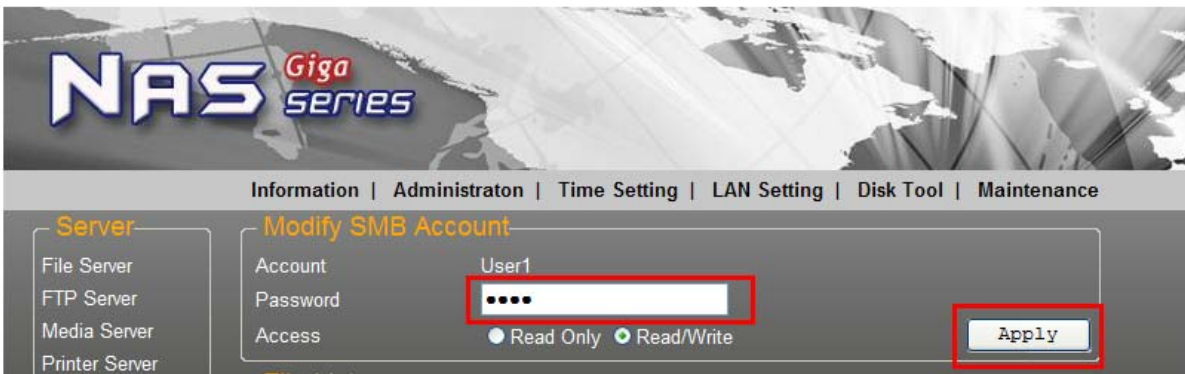


5.2 How to modify user account password

Select the account name ("User1") and then click "Modify".

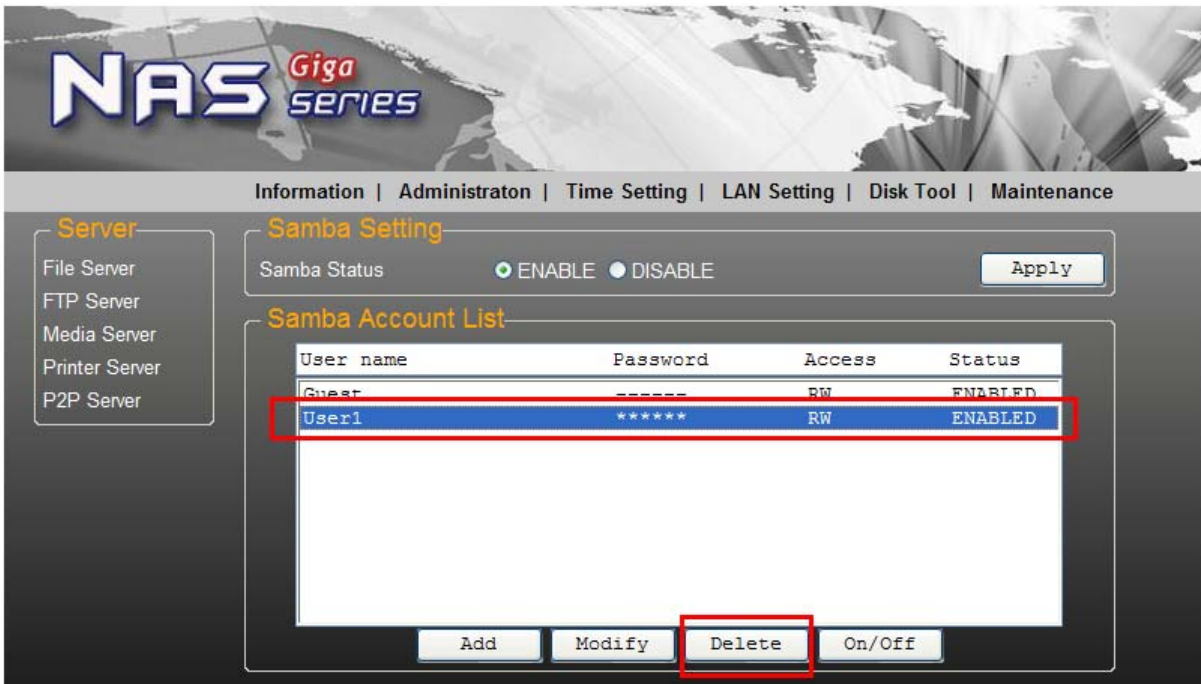


Enter new password and click **“Apply”** to save setting.



5.3 How to delete a user account

Select an account you wish to delete, click **“Delete”** to proceed. Please note that all the data inside the folder will be lost after the delete.



6.0 FTP Server

Remember to “**Enable**” the FTP service on the status page, when you plan on using FTP server.



- **FTP server configuration:** The standard port for FTP service is 21. If required, you can change it into any port ranging from 1025-6550. But in general, we recommended using the default port of 21.

Server Port	21	Port set either from 1025 to 65500 or 21.	Apply
-------------	----	---	-------

- **File language support:** By default, the encoding is set to English. If you want to store or transfer files with a different encoding (different language), choose the corresponding language from the drop down list. **In order to transfer and view the files correctly, it is important that you select the correct language!**

File Language support	Traditional Chinese (cp950) ▾	help	Change
<ul style="list-style-type: none">EnglishCentral Europe (cp1250)Cyrillic (cp1251)Latin I (cp1252)Greek (cp1253)Turkish (cp1254)Hebrew (cp1255)Arabic (cp1256)Baltic (cp1257)Vietnam (cp1258)Thai (cp874)Japanese Shift-JIS (cp932)Simplified Chinese (cp936)Korean (cp949)Traditional Chinese (cp950)			

Anonymous: By default an anonymous user name has been created, it allows FTP users to login without username and password. For security reasons, it is best to add a password!

Note: To be able to share FTP resource via internet, you need a router to assign the external IP to your Giga NAS. Contact your router vendor on how to assign the external IP.

6.1 How to create FTP account

FTP server allows you to share your data through internet, so an internet resource and router is required before setting up FTP server.

Select FTP server and click **"Add"** button and enter a name and password for the new FTP account and click **"OK"**. to continue.

NAS Giga SERIES

Information | Administration | Time Setting | LAN Setting | Disk Tool | Maintenance

Server

- File Server
- FTP Server**
- Media Server
- Printer Server
- P2P Server

FTP Setting

FTP Status: ENABLE DISABLE

Server Port: 21 Port set either from 1025 to 65500 or 21.

File Language support: Traditional Chinese (cp950) help

FTP Account List

User name	Password	Access	Status
anonymous	-----	RO	DISABLED

FTP Add Account

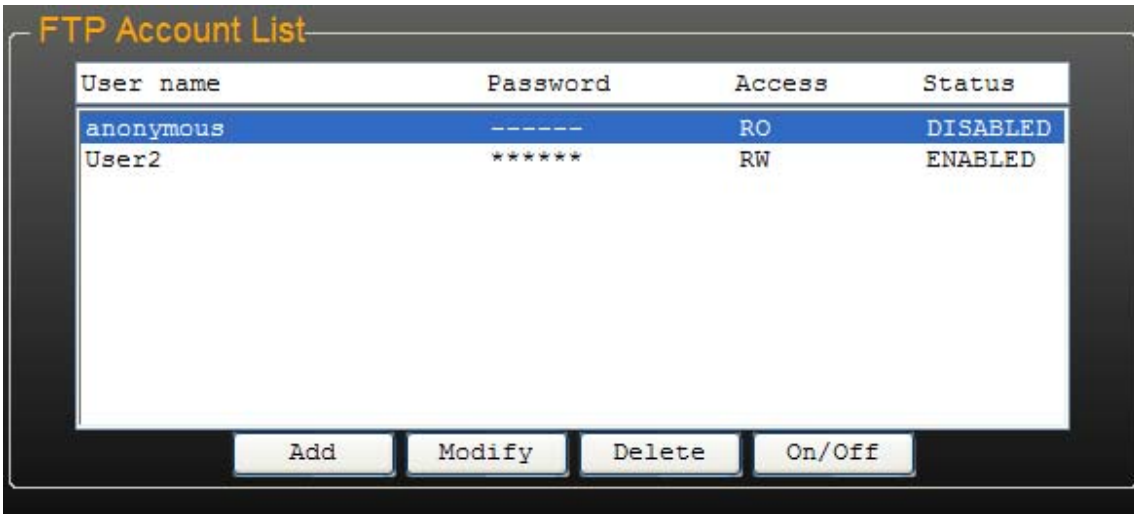
Account Name:

Password:

Access: Read only Read/Write

! Maximum number of characters is 12.

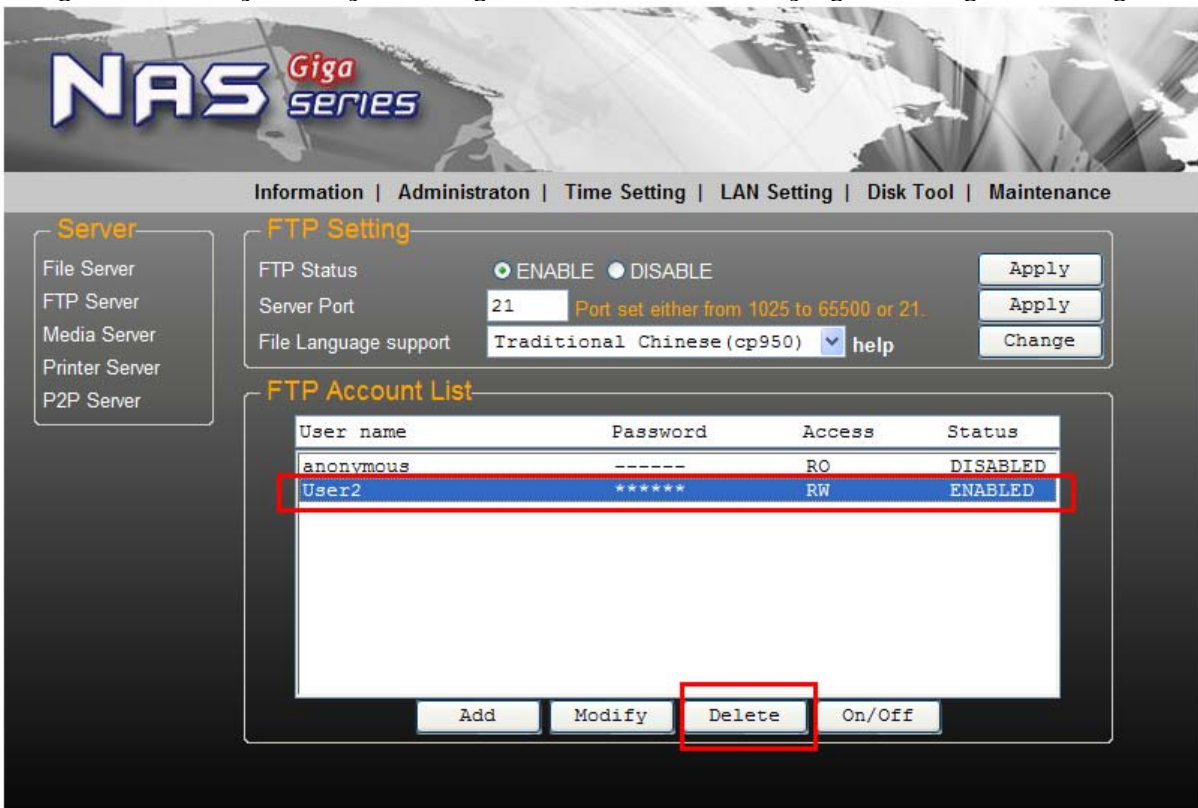
In the account list, you can see an overview of the existing accounts and status. For FTP file transfers, we recommend to use other dedicated FTP client software e.g. SyncQuick FTP, Cute FTP etc.



Note: When creating FTP accounts, please use ONLY English alphabet and no special character or space for FTP account name.

6.2 How to delete FTP account

In the "Account List", you can see an overview of the existing accounts and status; you can change them at any time by selecting the account and modifying, disabling or deleting it.



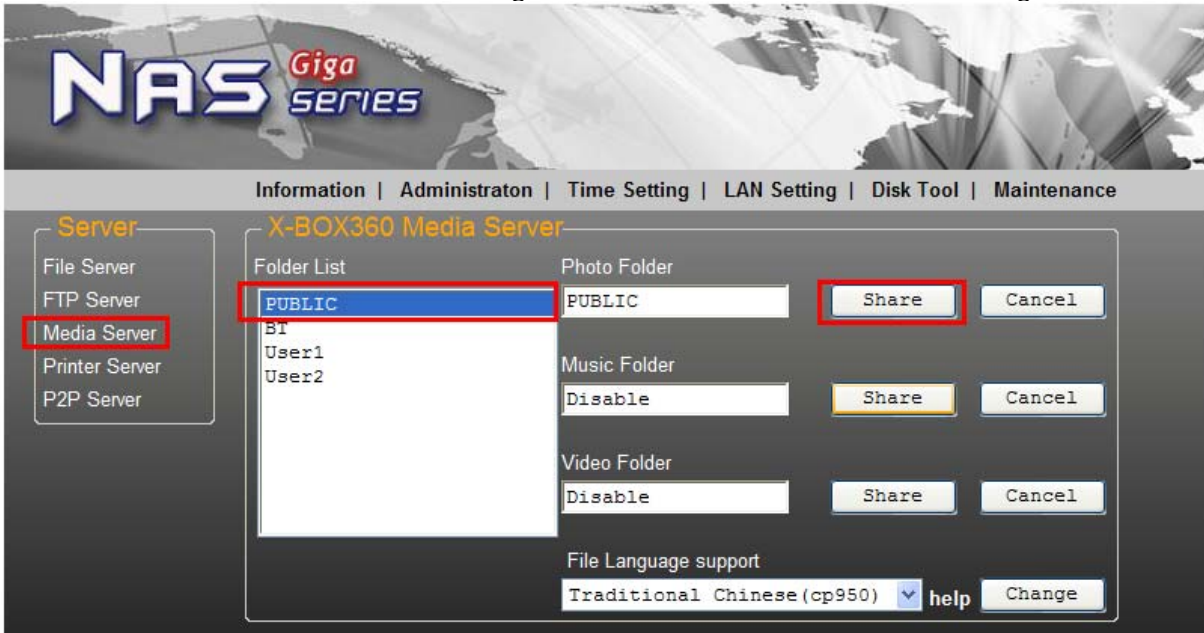
Note: Deleting a folder will also erase all the files stored inside that folder.

7.0 XBOX 360 UPnP Media server

The Media server on Giga NAS can be used to share your photo and music files with a XBOX360 video game console from Microsoft that is connected to the same local network.

Before you start, make sure both devices are connected to the same local network and turned on.

Go to the "Media Server" page and select the folder you already store the photo/ music/video content and click "Share" to enable. e.g. the folder "PUBLIC" is now enabling the Photo directory.



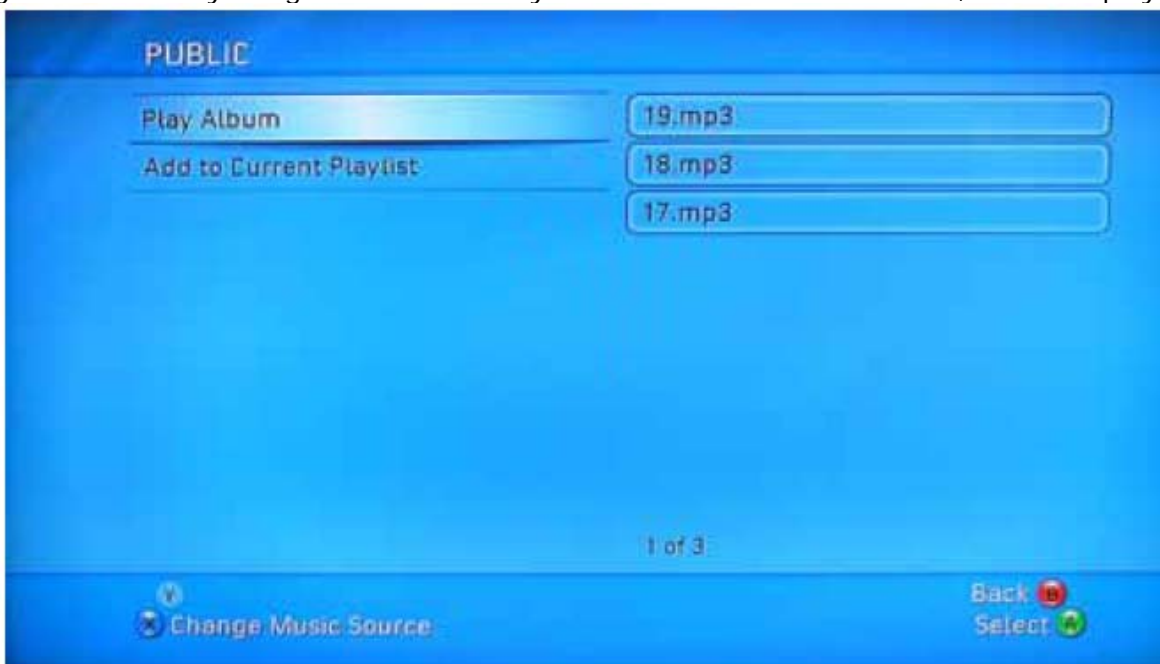
Go to media, select either Music or Pictures, and press **A** to continue on your XBOX 360.



Press **X** to change the source and select your network drive, it should show up as storage-xxx and display the folder that you have set up earlier on your Giga NAS.

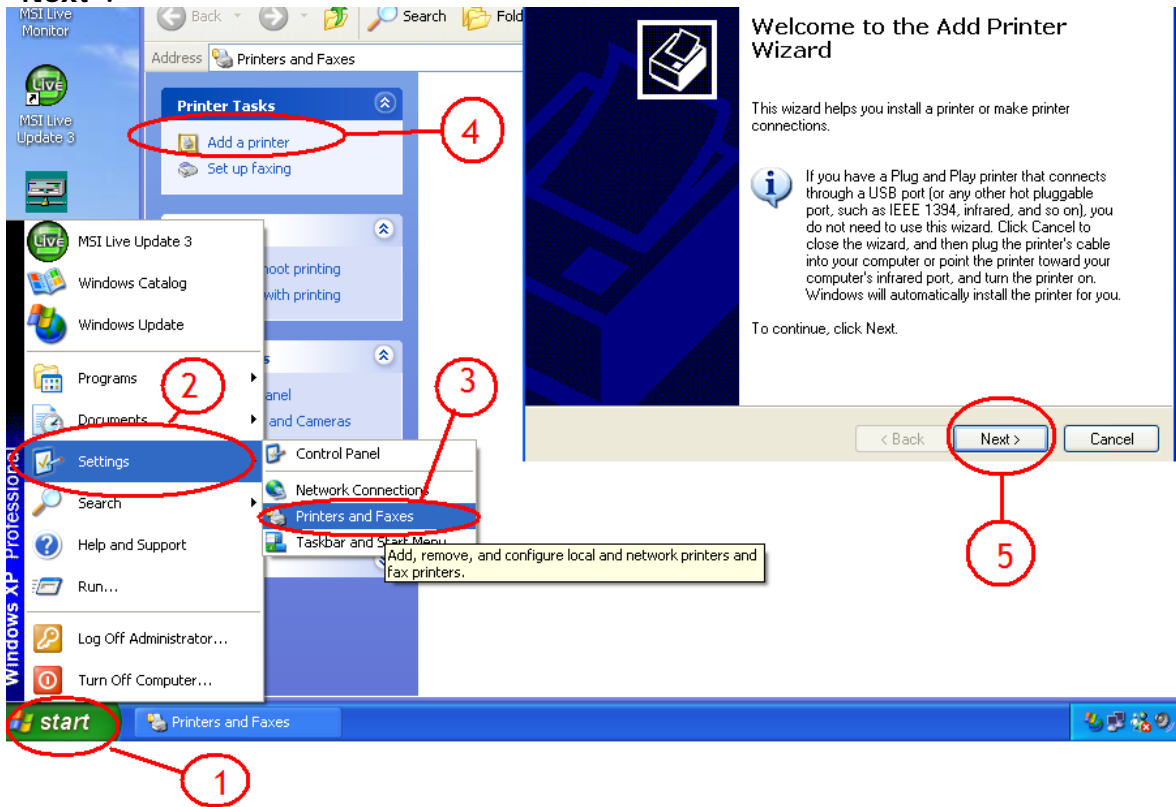


Inside the shared folder, you can access to your picture or music files, depending on which mode you are currently using. Select the files you would like to see or to listen, and start playback.

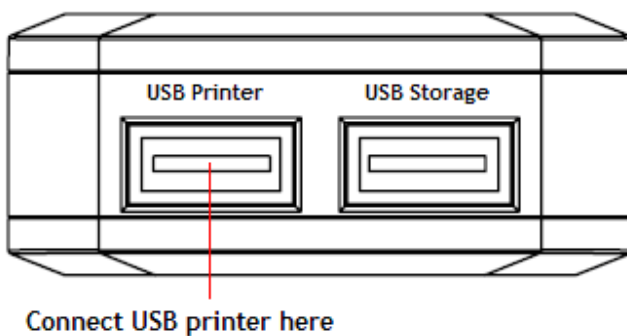


8.0 Printer Server

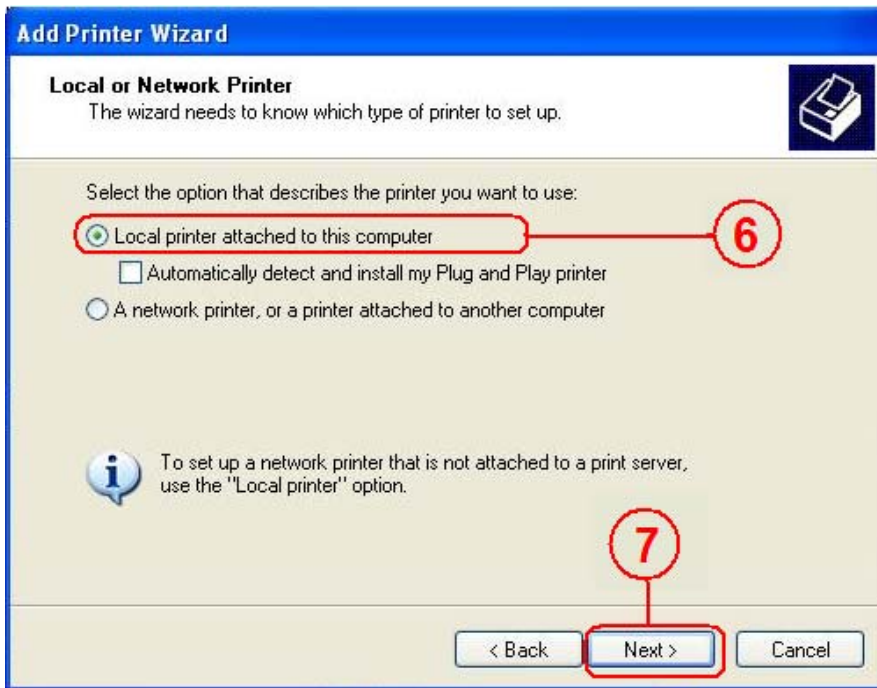
8.1 Firstly, install your Printer driver into your computer, (for example. if Epson PL-6200L Printer is connected to the NAS, you must install PL-6200L driver into your computer first). After driver installation, please click **"Start"** → **"Setting"** → **"Printer and Faxes"** → **"Add a printer"** → **"Next"**.



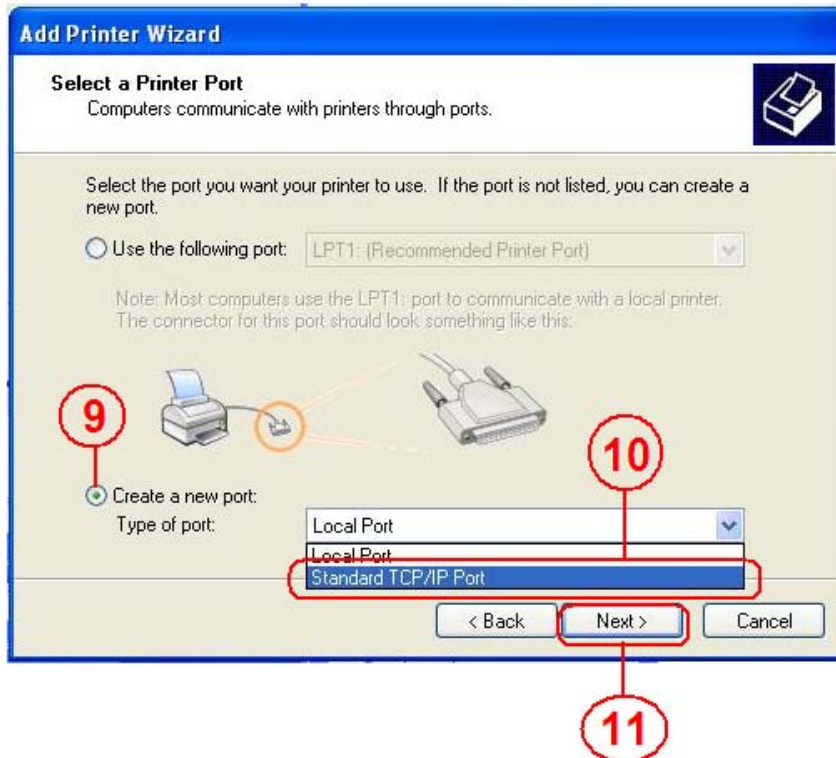
8.2 Connect the USB printer to Giga NAS (there is an available USB port on Giga NAS).



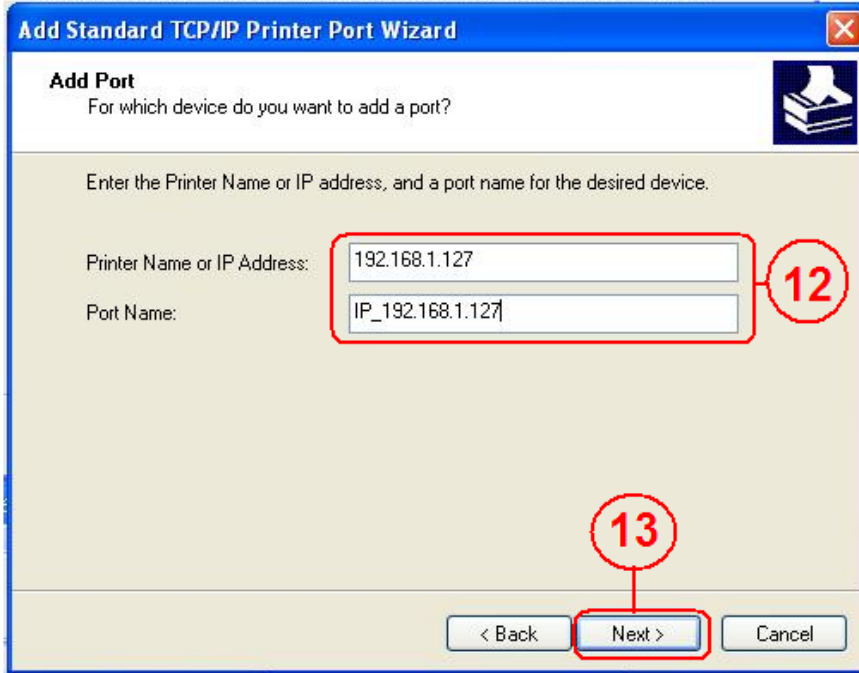
8.3 Go to **"Add Printer Winzard"**, select **"Local printer"** and click **"Next"** to continue.



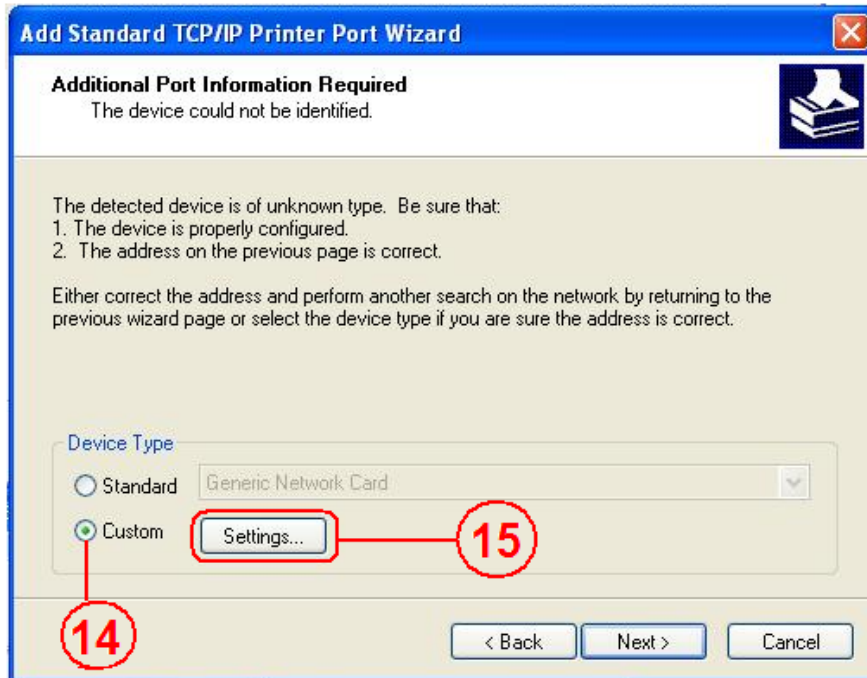
8.4 Select **"Create a new port type of port:"** , choose **"Standard TCP/IP Port"** , and click **"Next"** to continue.



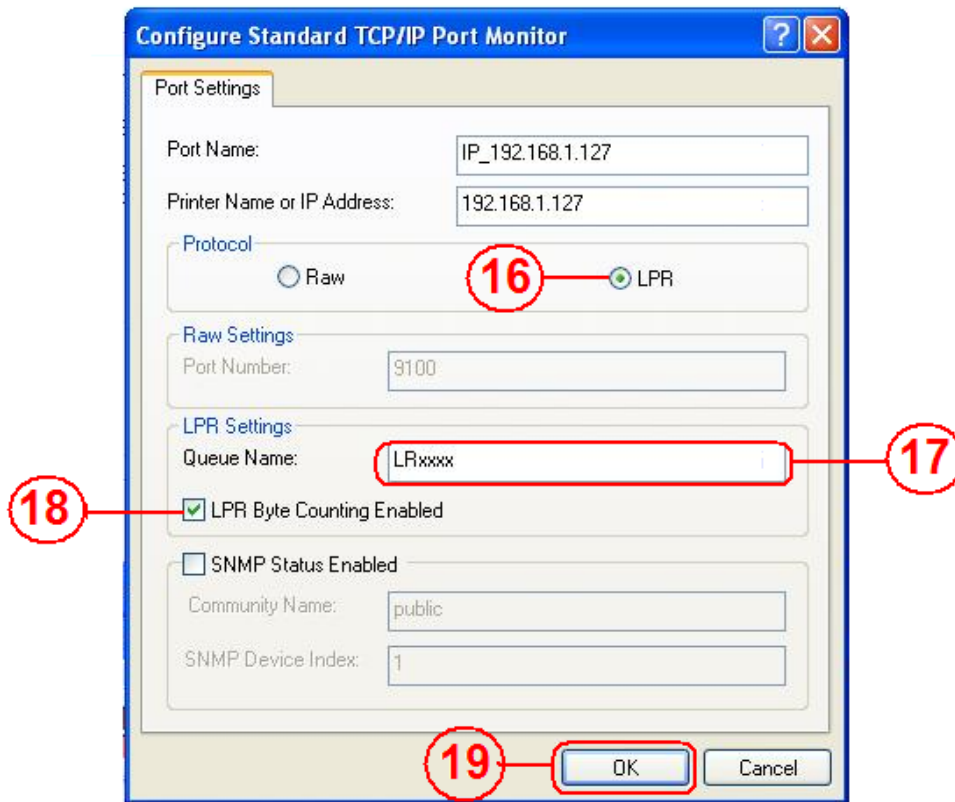
8.5 Enter the Giga NAS IP address, then click “Next” to continue.



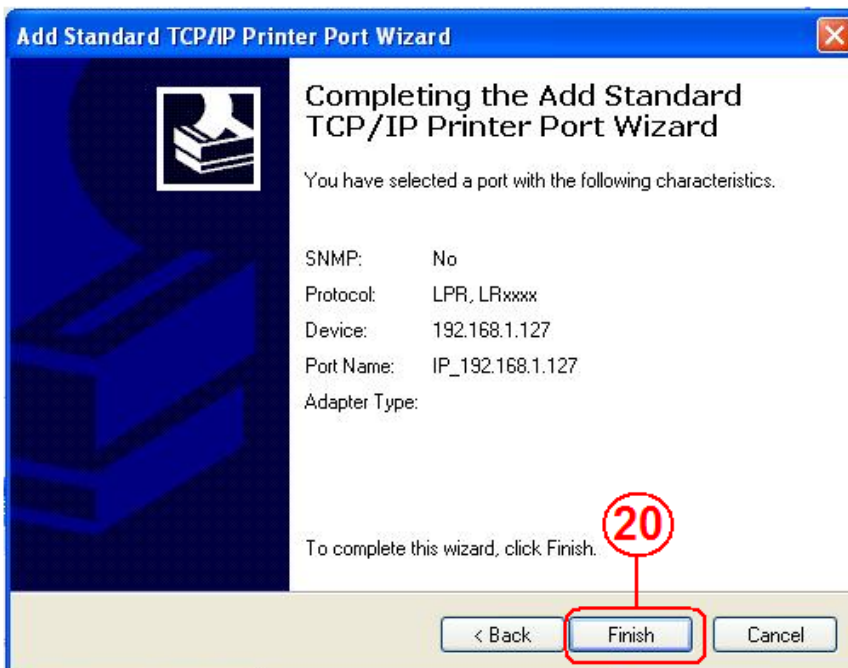
8.6 Select “Custom” and go to “Setting”.



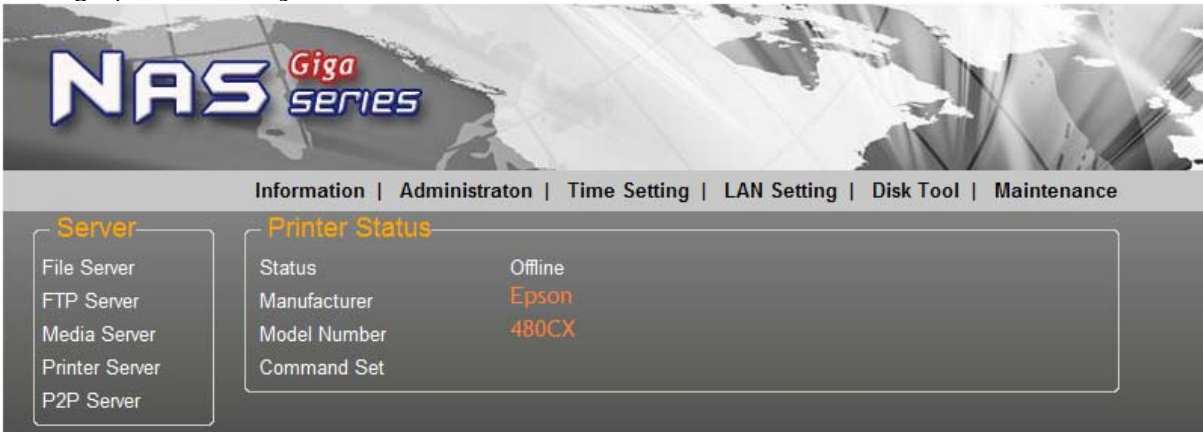
8.7 Select "LPR" in protocol, and give a queue name eg:LRxxx; select LPR byte enable and click "OK" to finish the port setting.



8.8 Click "Finish" to complete TCP/IP printer setup.



8.9 Go to "Printer server page and check printer server status. If status shows "OK", the printer is setting up successfully.

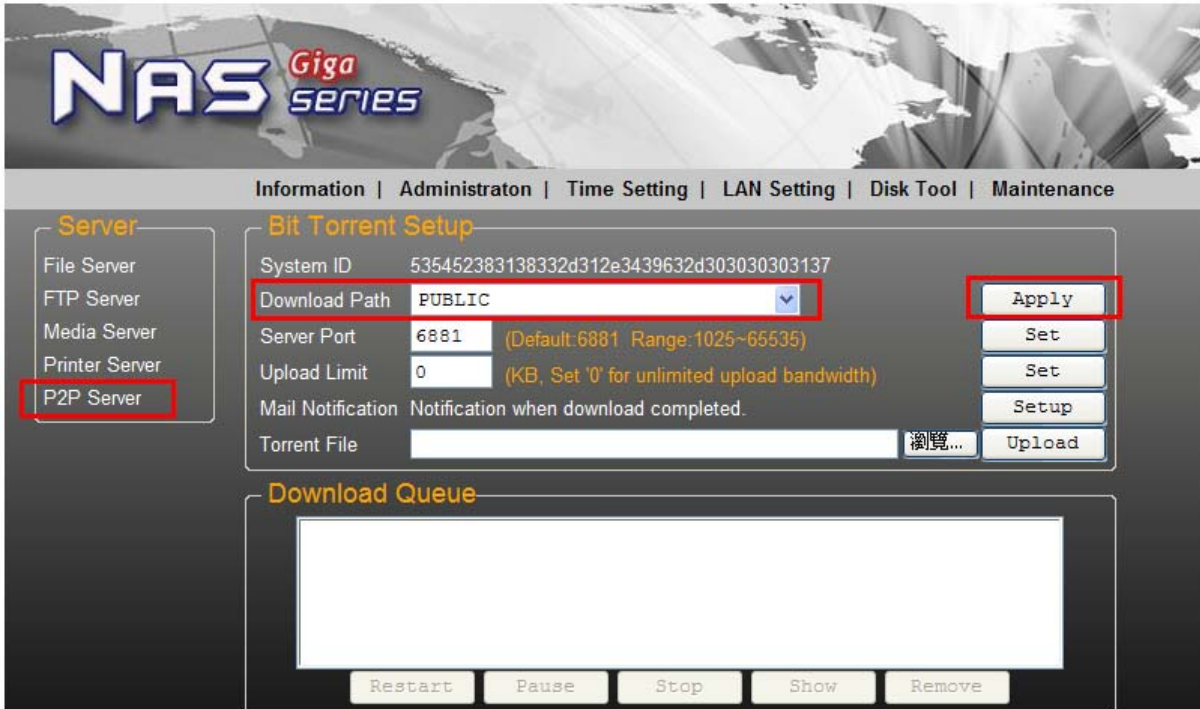


Notes: Giga NAS Printer server does not support GDI/Host-based printers. For some Multi Function Printers (MFP); scanning functions might not be functional probably. Please contact the printer manufacture for detailed specifications.

9.0 P2P server setup

Giga NAS supports Bit Torrent download independently without using PC resource. Maximum of 4 bit torrent downloads can be running at the same time.

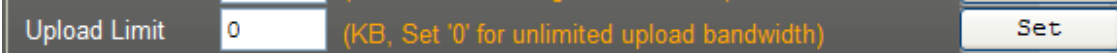
9.1 Select "P2P server" server, choose the "Download Path" you wish to use, click "Apply" to save setting. (DO NOT change path setting while perform BT downloading, otherwise the downloaded job will be missing).



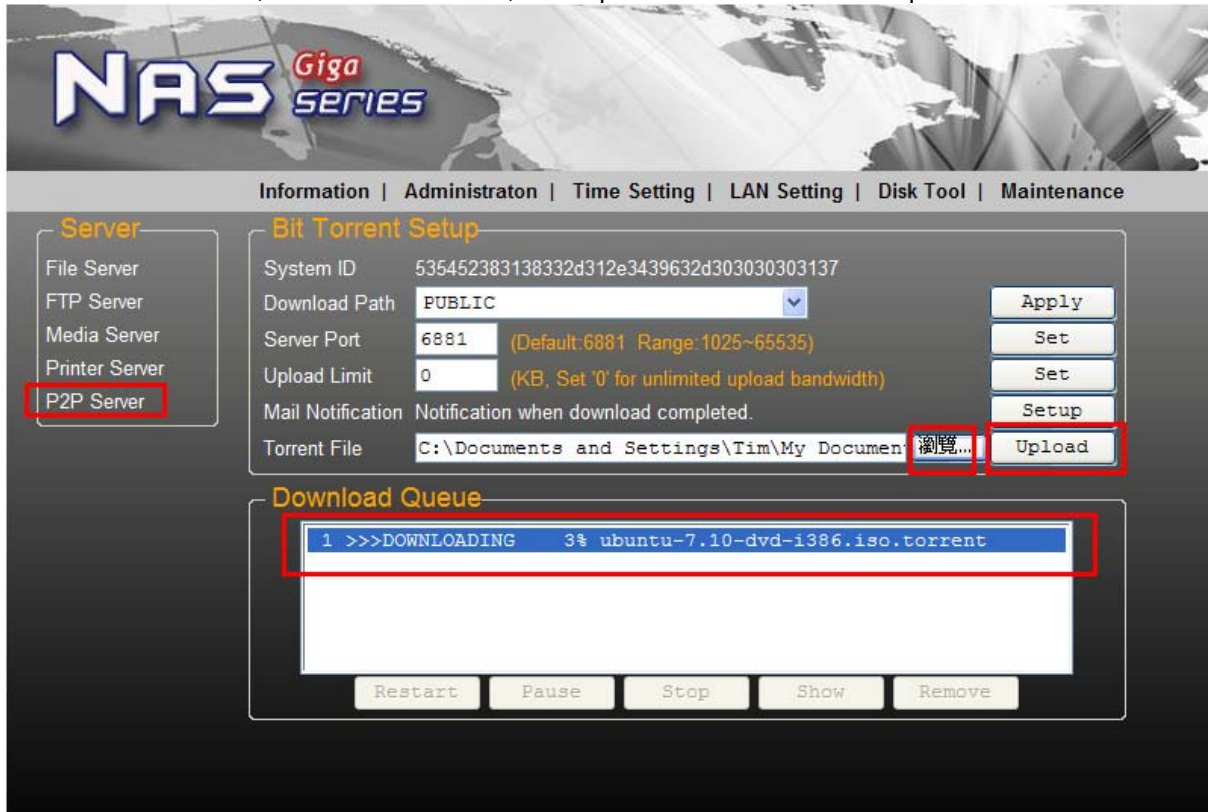
9.2 Server port range can be chosen from 6881 to 65535. (6881 is the default setting)



9.3 Create an upload speed limit: 0=unlimited upload speed (4 KBps is the minimum speed), and click "Set" to save setting.



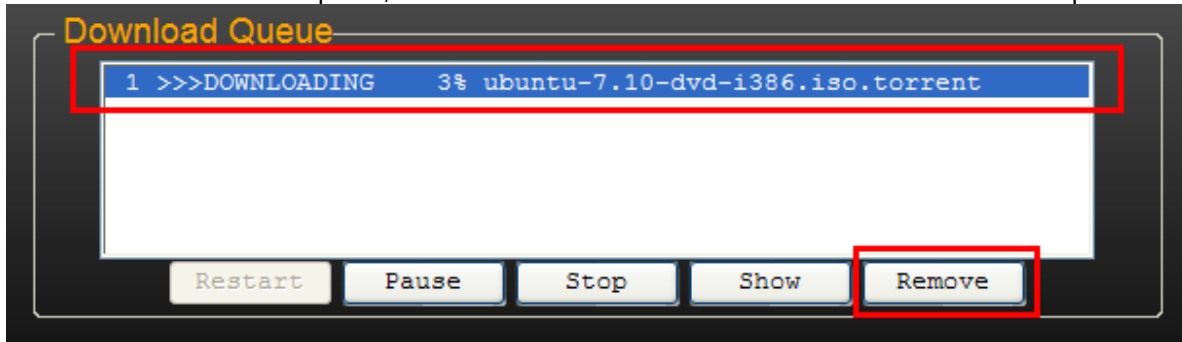
9.4 Click "Browse", select .torrent file, and upload to the download queue.



Note: The jobs listed in the Download Queue will be removed when Giga NAS is turned off or HDD is removed.

9.5 Delete Bit Torrent jobs

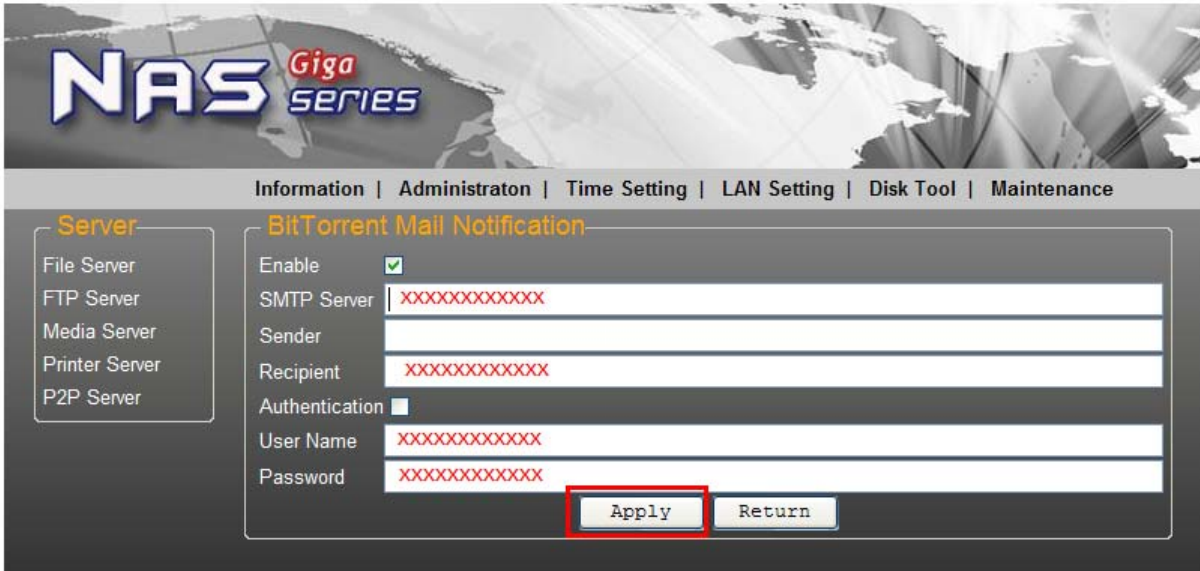
After the download complete, click "Remove" to delete the download Jobs from queue window.



Note: Jobs listed in the "Download Queue" will be removed when Giga NAS is turned off or HDD is removed.

9.6 Mail Notification

After the download is successful, an email can be sent to a designated email address. Click **“Mail setup”**, input SMTP server, recipient email, SMTP A/C, Password, and click **“Apply”** to save setting.



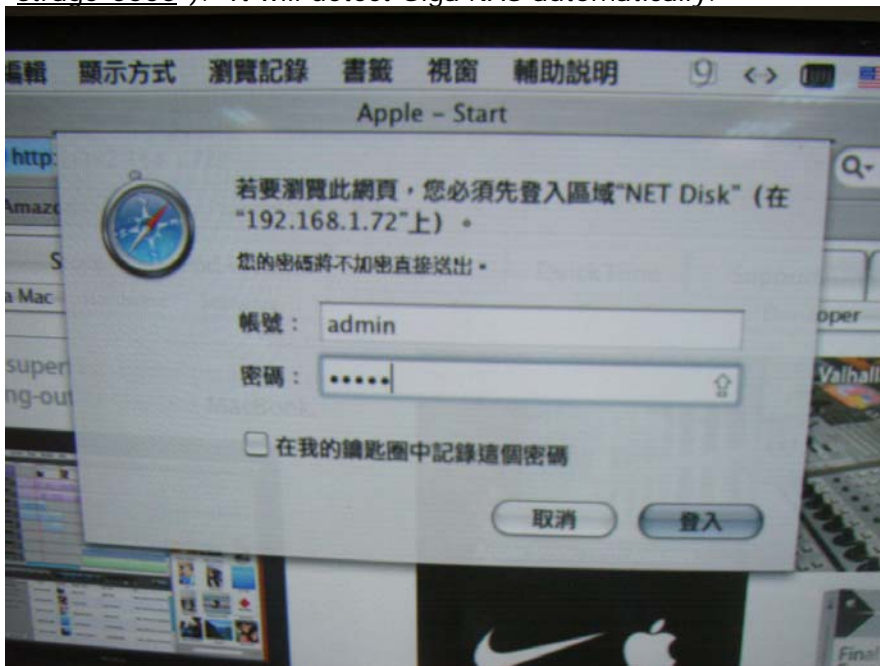
The screenshot shows the BitTorrent Mail Notification configuration page in the NAS Giga Series web interface. The page has a navigation bar with links for Information, Administration, Time Setting, LAN Setting, Disk Tool, and Maintenance. On the left, there is a 'Server' menu with options for File Server, FTP Server, Media Server, Printer Server, and P2P Server. The main configuration area is titled 'BitTorrent Mail Notification' and includes the following fields:

- Enable:
- SMTP Server:
- Sender:
- Recipient:
- Authentication:
- User Name:
- Password:

At the bottom of the configuration area, there are two buttons: 'Apply' (highlighted with a red box) and 'Return'.

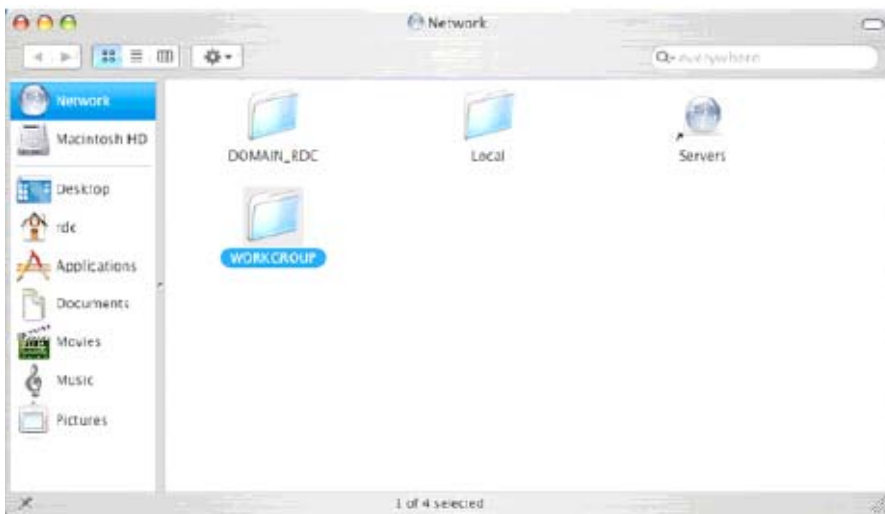
10.0 Mac installations (Mac 10.5.4 or above)

Open Mac browser **“Safari”** and key-in the host name of the Giga NAS Dongle (for example, **“strage-0000”**). It will detect Giga NAS automatically.



10.1 How to setup SAMBA in Mac OS X 10.5.4

1. Click "Go" on the toolbar, and select "Network" as the screenshot shown below.



2. Double Click "WORKGROUP" (or the correct group name of Giga NAS), you will find Giga NAS Dongle "STORAGE-xxxx" (or the correct name of the Giga NAS).

3. Click on the **storage-xxxx** (or the correct name of the Giga NAS).



4. Select the folder you wish to share, and click **“OK”** to share the folder.

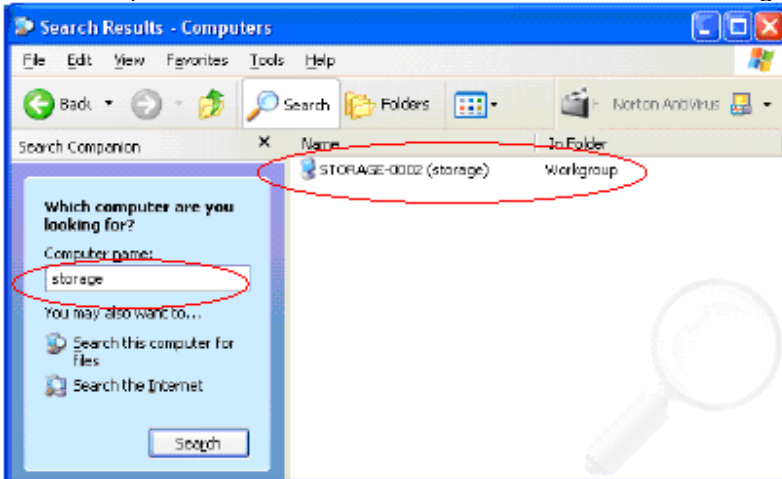


5. Click **“OK”** to show the folder in the Desktop.

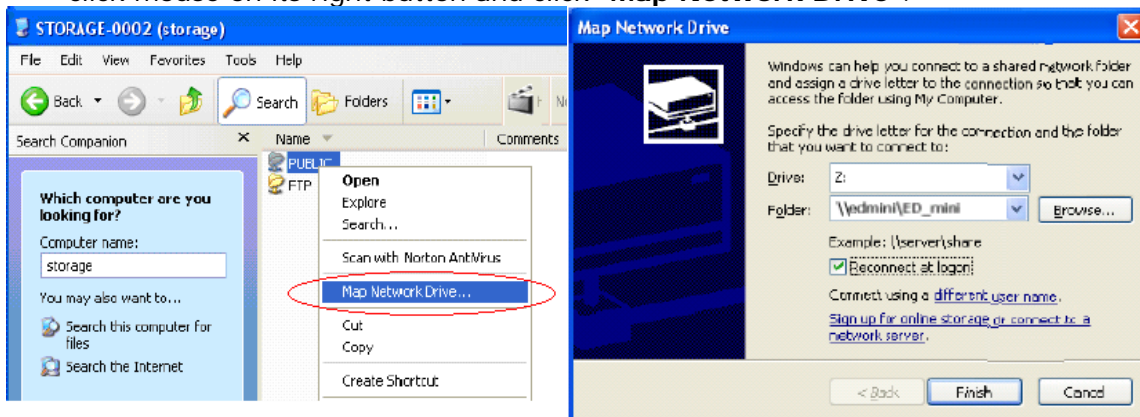


11.0 How to map the shared folders on your Giga NAS Dongle as Network Drives to your computer system (Showing NAS disk drive in network).

- Press **“Start”** button on Windows desktop
- Press **“Search”**
- Select folders
- Select Computer or people
- Select a computer on the network and a new window will appear.
- Key in the host name, (For example “storage-xxxx”) in the **“Computer name”** column and then press **“Search”** button. You will see the following window.



- Point to the **“Storage-xxxx”**, double click the mouse. Choose the folder you wish to map, click mouse on its right button and click **“Map Network Drive”**.



Note: For faster connection and usability, we recommend that you map folders which you use constantly as network drives. This creates a direct access to the shared folders on NAS from My Computer.

12.0 Q&A

Q: What is Giga NAS default IP?

A: The default IP address for Giga NAS is **169.254.0.1** or enter "storage" in IE browser bar to search for it.



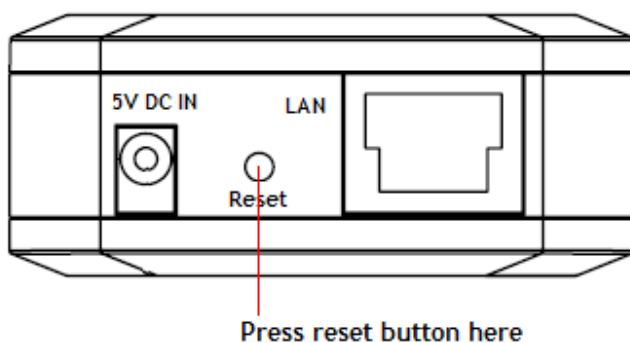
Q: What is Giga NAS default login name and password?

A: The Giga NAS default Login name: "admin", default password: "admin".

Q: Forgot my login password, How should I do?

A: Please follow the steps below.

- Press the reset button and keep that position.
- Unplug and reconnect the power.
- Wait for 30 seconds, and then release the reset button.
- Giga NAS will go back to factory defaults.



PS: Only SAMBA/FTP account settings will remain in the Giga NAS; others will go back to factory default.

Q: Why can't I create/share folders in SMB or FTP server?

A: To avoid languages support issue, you are suggested to create/share folders with English characters only.

Q: Why can't I upload the files via LAN connection or got disconnected?

A1: Please make sure you are connected to the network properly and you have the access right (read & write) for the folders.

Q: How to setup Giga NAS to be in Daylight saving time?

A: Giga NAS does not support Daylight saving time setting.

Q: Why WinXP can not enter SMB folder with password via Giga NAS?

A: Please update Win XP to SP2 or above. After the update, please make sure if you have installed Norton Internet Security, if you do, please check with Norton service center.

Q: What Operating Systems does Giga NAS support?

A: Giga NAS supports Microsoft Windows 2000/XP/Vista and Apple Macintosh OS 10.5.4 above.

Q: How do I access Giga NAS via the Internet?

A: If your Giga NAS is configured with a fixed public IP, please perform the following steps.

- Enter the management web base of Giga NAS, and go to the FTP Server page to enable FTP Status.
- Create user account and limits of authority.

- Open Microsoft Internet Explorer or other FTP client software (recommended), and enter "ftp:// Giga NAS IP" in the IP address field.

Q: Why FTP can not link to Giga NAS or show link time out when using IE?

A: Due to IE FTP is not compatible with some routers; you are suggested to use FTP client software to start with. If you would like to use IE FTP to link to Giga NAS, please refer to following steps:

- Please open port 21 and 20 on Router and link to Giga NAS.
- Open IE > Tool > Internet Options>Advance.
- Click "Enable folder view for FTP site" and click "OK".

Q: Why my FTP client software can not link to Giga NAS or fail during file transfer??

A: Due to software design, it's possible that certain FTP software is not compatible with Giga NAS. Giga NAS is now tested with most of popular FTP client software such as CuteFTP or SyncQuick FTP software.

Q: What is the limitation of user to login FTP and Samba server?

A:

Samba Server	User Level Access (maximum create 16 user accounts, 16 folders shared by one account)
FTP Server	maximum create 16 user account, 16 folders shared by one account
Maximum User Login	FTP 8 User/Samba 8 User (Total 64 TCP connection at the same time)

Q: Any limitations for Giga NAS file name length?

A: The limitation of length of file folder is 12 bytes.

Q: What can DHCP do as well with Giga NAS?

A: You can setup Giga NAS as a DHCP server if there is no any other DHCP Server exists in your local network. Otherwise, Giga NAS will automatically turn off its DHCP server function and become a DHCP client. For example, if you have installed a router with built-in (activate) DHCP Server, Giga NAS will automatically setup itself as DHCP client.